

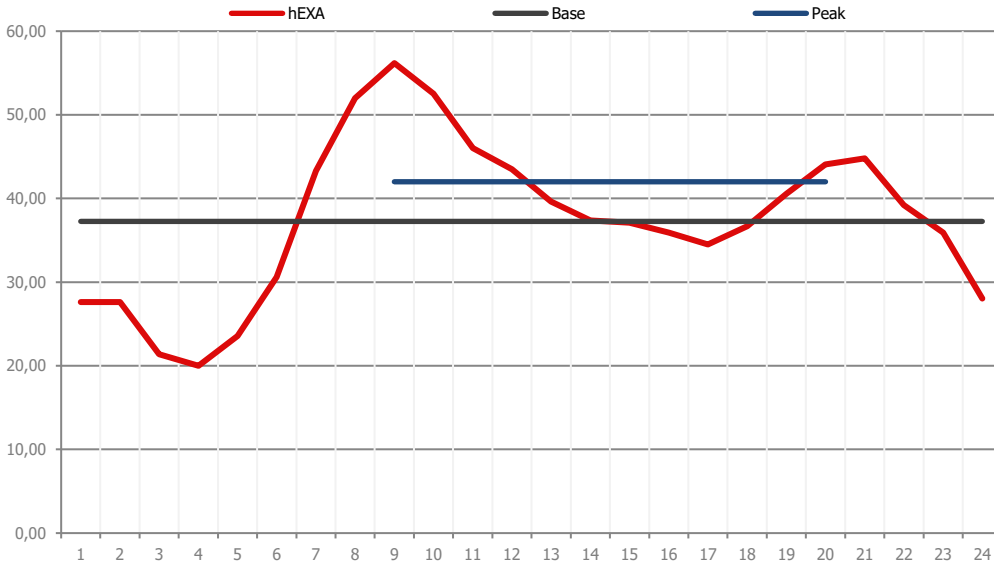
Hourly Prices [EUR/MWh]

Trade Day: **03.04.2018**

Delivery Day: **4.4.2018**

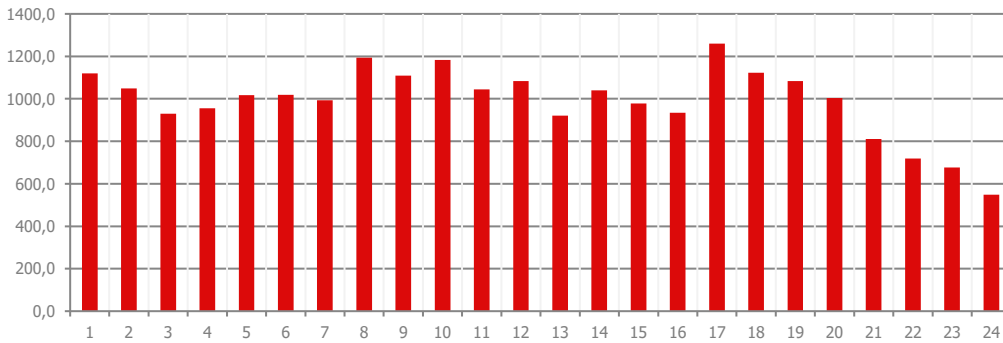
1	2	3	4	5	6	7	8	9	10	11	12	13	14	15	16	17	18	19	20	21	22	23	24
27,61	27,61	21,39	20,00	23,56	30,59	43,30	52,00	56,18	52,51	46,02	43,50	39,64	37,37	37,10	35,91	34,50	36,69	40,55	44,07	44,80	39,20	35,94	28,05
↑	↑	↓	↓	↑	↑	↑	↑	↑	↑	↑	↑	↑	↓	↑	↑	↑	↑	↑	↓	↓	↓	↓	↓

Hourly Product Results



Block Prices [EUR/MWh]

bEXAbase (01-24)	37,26	↑
bEXApeak (09-20)	42,00	↑
bEXAoffpeak (01-08/21-24)	32,52	↓
bEXAoffice (09-16)	43,53	↑
bEXAoff1 (01-08)	30,29	↑
bEXAoff2 (21-24)	37,00	↓
bEXAdream (01-06)	24,50	↑
bEXAlunch (11-14)	41,63	↑
bEXAteatime (17-20)	38,95	↑
bEXAmoonlight (01-04)	23,21	↓
bEXAsunrise (05-08)	37,36	↑
bEXAearlytwin (09-10)	54,34	↑
bEXAlatetwin (15-16)	36,50	↑
bEXAwakeup (07-08)	47,65	↑
bEXAprime (21-22)	42,00	↓



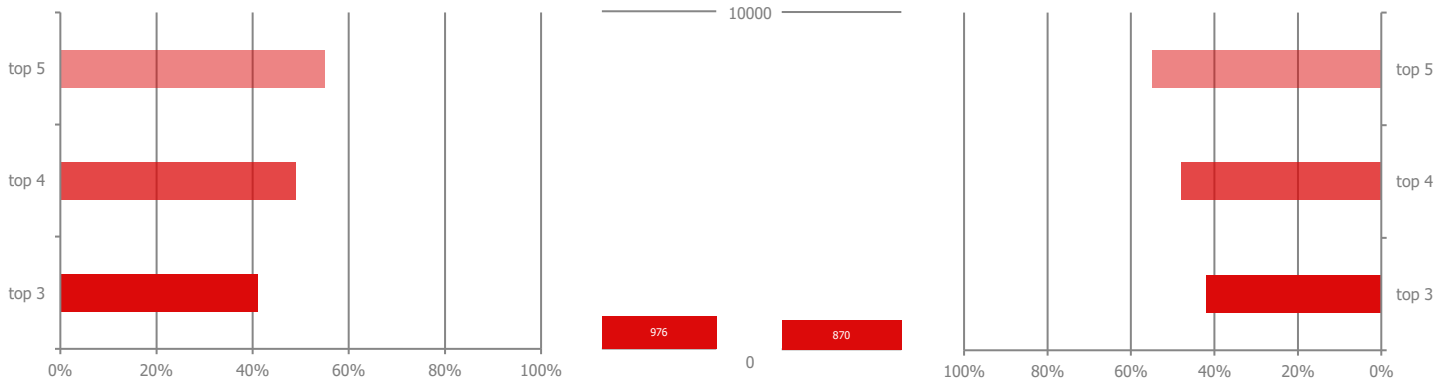
Volumes [MWh]

For Day: 4.4.2018	23.797,40	↑
Current Month	71.527,18	
Last Month	693.082,28	

Market Concentration **buying** side

Herfindahl Index

Market Concentration **selling** side

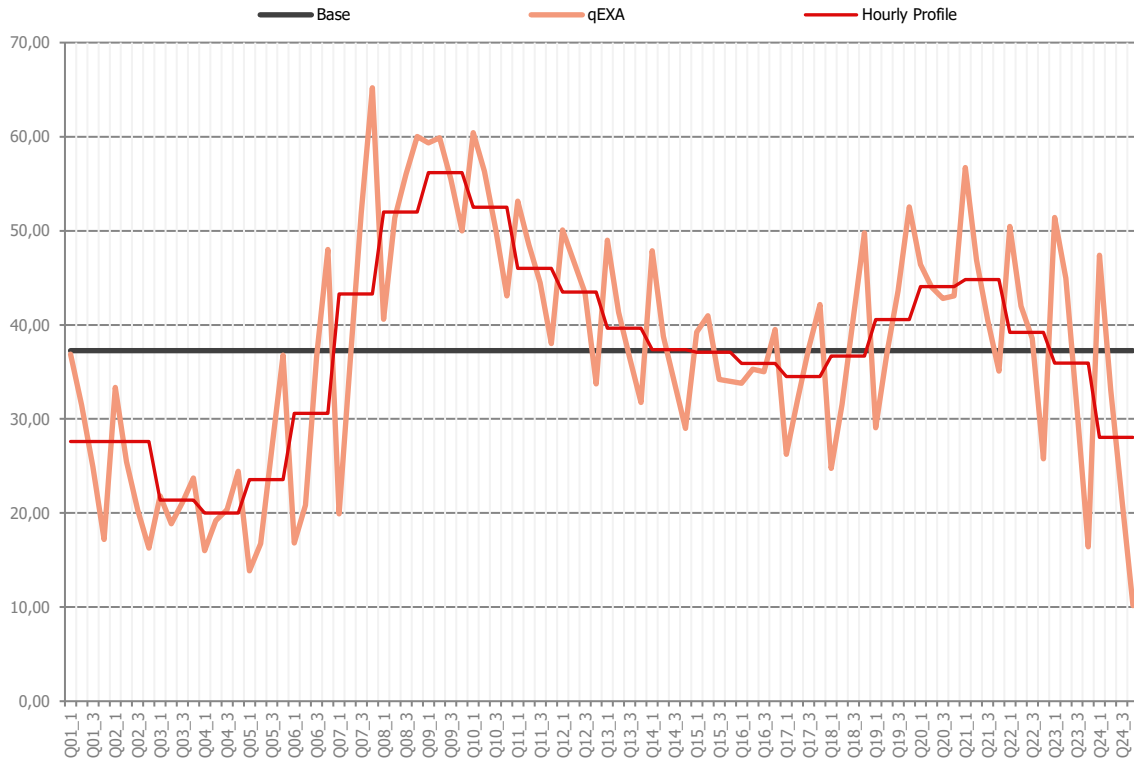


Marketshare of the 3/4/5 largest participants according to the daily trading volume. Herfindahl Index moving from a very large amount of very small participants (0) to a single monopoly (10000).

**Disclaimer:** All information presented by the EXAA Daily Spotlight is owned by the Energy Exchange Austria (EXAA). This information does not constitute any advice to buy or sell an energy product. EXAA does not assume the responsibility of the completeness or correctness of the information.

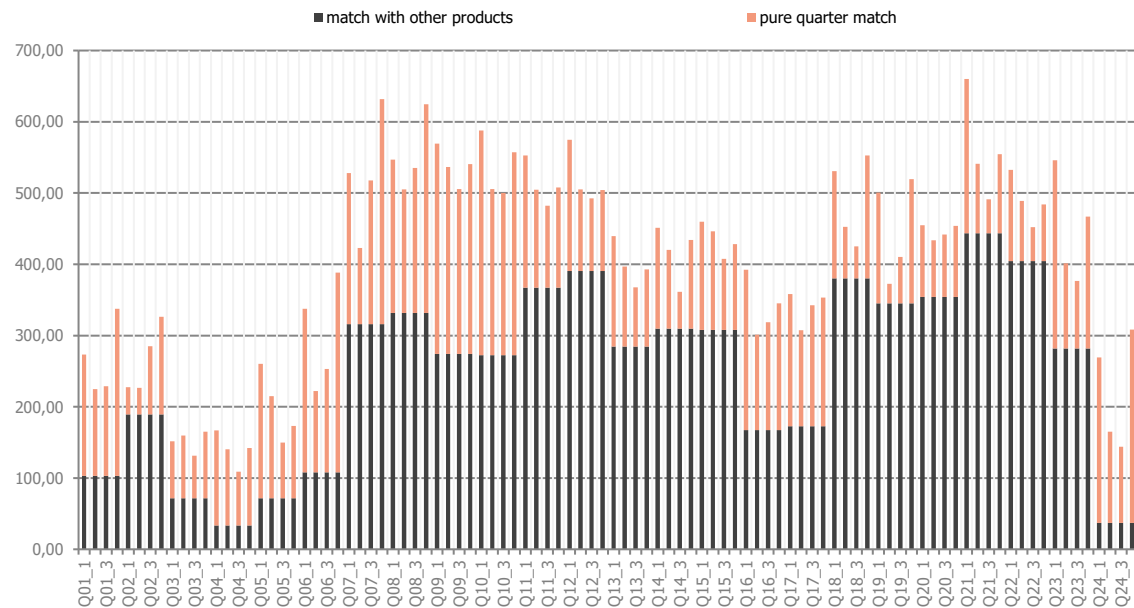
Quarter Hour Prices

Delivery Day: **4.4.2018**



Product / Price	Product / Price
Q01_1 36,90	Q13_1 49,00
Q01_2 31,43	Q13_2 41,36
Q01_3 24,90	Q13_3 36,44
Q01_4 17,19	Q13_4 31,74
Q02_1 33,36	Q14_1 47,89
Q02_2 25,47	Q14_2 38,77
Q02_3 20,31	Q14_3 33,80
Q02_4 16,26	Q14_4 29,00
Q03_1 21,83	Q15_1 39,22
Q03_2 18,87	Q15_2 40,98
Q03_3 21,15	Q15_3 34,20
Q03_4 23,72	Q15_4 34,00
Q04_1 16,00	Q16_1 33,80
Q04_2 19,20	Q16_2 35,30
Q04_3 20,37	Q16_3 35,02
Q04_4 24,43	Q16_4 39,50
Q05_1 13,85	Q17_1 26,25
Q05_2 16,76	Q17_2 32,04
Q05_3 26,84	Q17_3 37,55
Q05_4 36,80	Q17_4 42,15
Q06_1 16,83	Q18_1 24,75
Q06_2 20,82	Q18_2 31,55
Q06_3 36,70	Q18_3 40,70
Q06_4 48,00	Q18_4 49,77
Q07_1 19,90	Q19_1 29,07
Q07_2 36,25	Q19_2 36,94
Q07_3 51,83	Q19_3 43,62
Q07_4 <b>65,20</b>	Q19_4 52,55
Q08_1 40,60	Q20_1 46,40
Q08_2 51,37	Q20_2 44,00
Q08_3 56,00	Q20_3 42,80
Q08_4 60,03	Q20_4 43,09
Q09_1 59,34	Q21_1 56,73
Q09_2 59,90	Q21_2 46,89
Q09_3 55,48	Q21_3 40,51
Q09_4 50,00	Q21_4 35,07
Q10_1 60,43	Q22_1 50,47
Q10_2 56,30	Q22_2 42,00
Q10_3 50,20	Q22_3 38,55
Q10_4 43,09	Q22_4 25,78
Q11_1 53,14	Q23_1 51,40
Q11_2 48,49	Q23_2 44,96
Q11_3 44,46	Q23_3 31,00
Q11_4 38,00	Q23_4 16,40
Q12_1 50,09	Q24_1 47,40
Q12_2 46,75	Q24_2 33,14
Q12_3 43,42	Q24_3 21,50
Q12_4 33,74	Q24_4 <b>10,16</b>

Quarter Hour Volumes



Quarter Hour Product Indicators

qEXA MIN Price of the Day: **10,16** EUR/MWh Q24\_4      MIN Spread (hEXA - qEXA) of the Day: -21,9 EUR Q07\_4  
 qEXA MAX Price of the Day: **65,20** EUR/MWh Q07\_4      MAX Spread (hEXA - qEXA) of the Day: 23,4 EUR Q07\_1