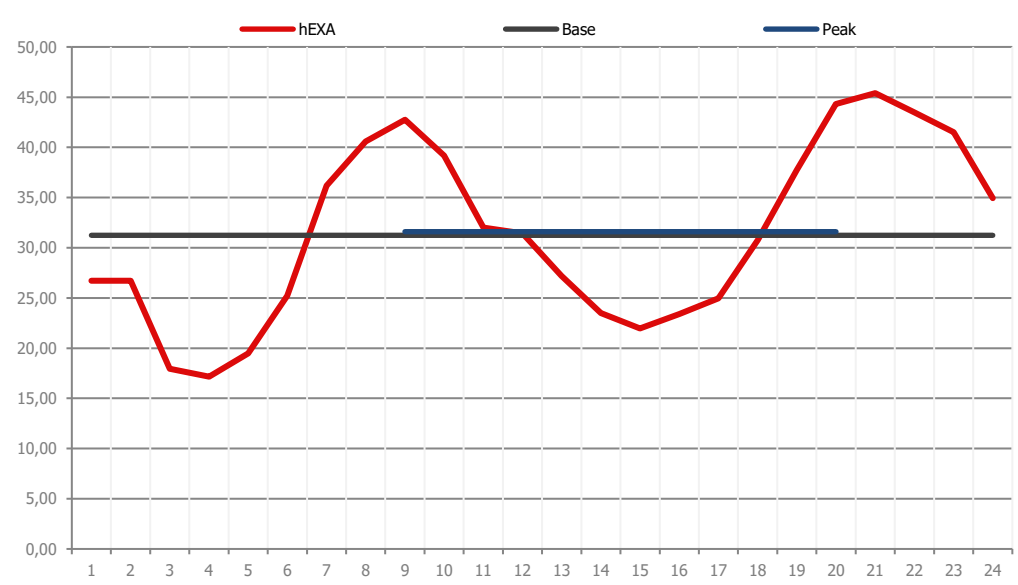


Hourly Prices [EUR/MWh] Trade Day: **25.04.2018** Delivery Day: **26.4.2018**

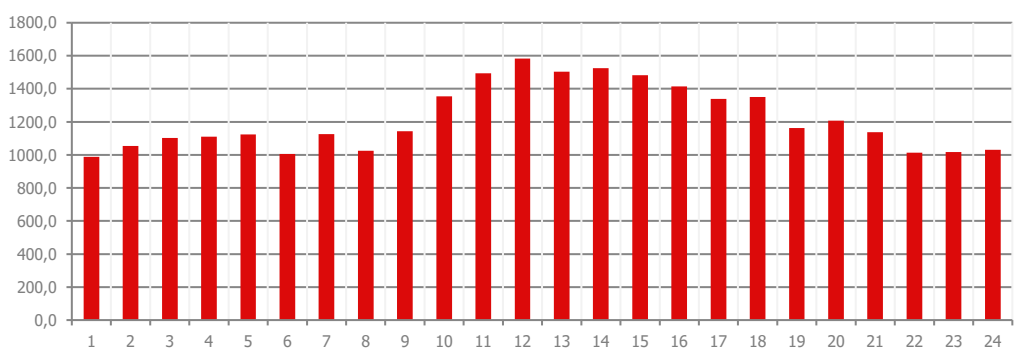
1	2	3	4	5	6	7	8	9	10	11	12	13	14	15	16	17	18	19	20	21	22	23	24
26,70	26,70	17,93	17,16	19,49	25,22	36,17	40,59	42,75	39,19	32,00	31,44	27,20	23,48	21,97	23,40	24,96	30,76	37,74	44,33	45,40	43,49	41,52	34,93
↓	↓	↓	↓	↑	↑	↑	↑	↑	↑	↑	↑	↑	↑	↓	↑	↑	↑	↑	↑	↑	↑	↑	↑

Hourly Product Results



Block Prices [EUR/MWh]

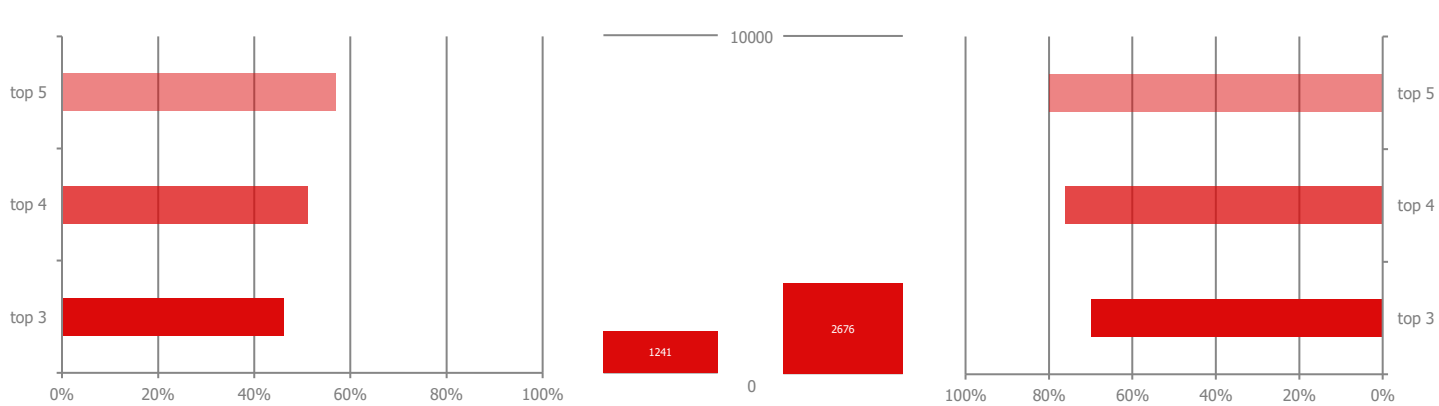
bEXAbase (01-24)	31,24	↑
bEXApeak (09-20)	31,60	↑
bEXAoffpeak (01-08/21-24)	30,88	↑
bEXAoffice (09-16)	30,18	↑
bEXAoff1 (01-08)	25,65	↓
bEXAoff2 (21-24)	41,34	↑
bEXAdream (01-06)	21,41	↓
bEXAlunch (11-14)	28,53	↑
bEXAteatime (17-20)	34,45	↑
bEXAmoonlight (01-04)	20,94	↓
bEXAsunrise (05-08)	30,37	↑
bEXAearlytwin (09-10)	40,97	↑
bEXAlatetwin (15-16)	22,69	↑
bEXAawakeup (07-08)	38,38	↑
bEXAprime (21-22)	44,45	↑



Volumes [MWh]

For Day: 26.4.2018	29.292,65	↑
Current Month	597.171,80	
Last Month	693.082,28	

Market Concentration **buying** side Herfindahl Index Market Concentration **selling** side

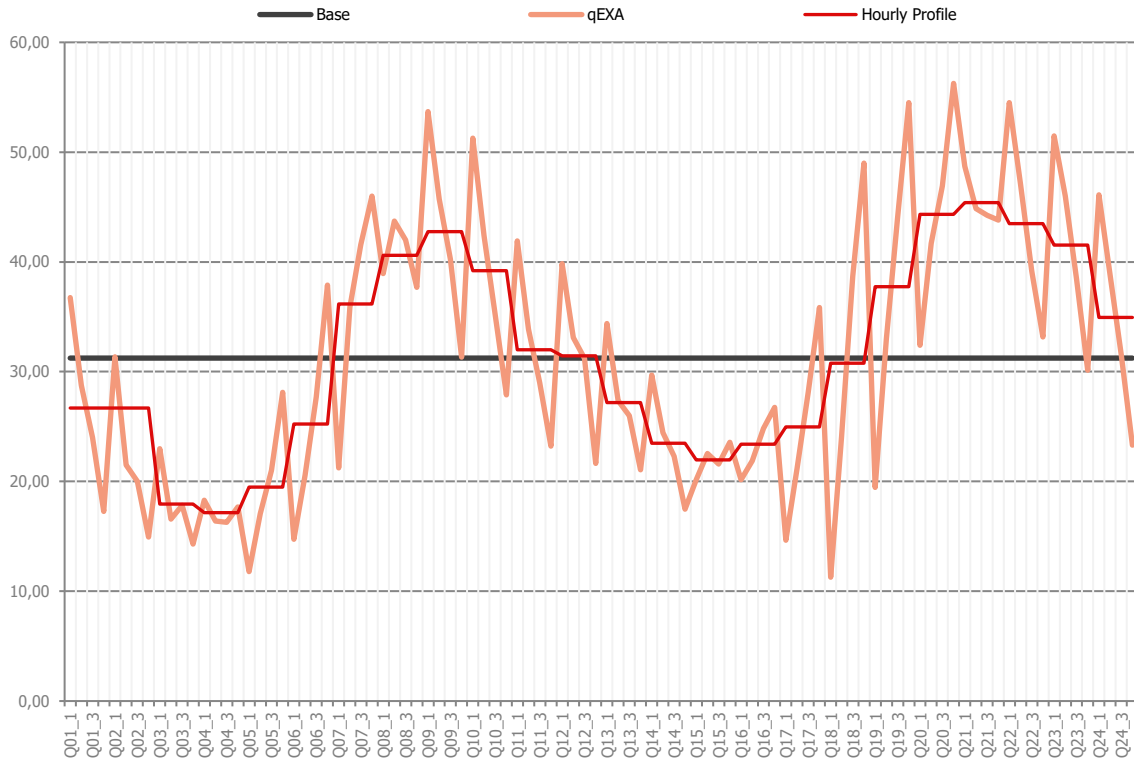


Marketshare of the 3/4/5 largest participants according to the daily trading volume. Herfindahl Index moving from a very large amount of very small participants (0) to a single monopoly (10000).

Disclaimer: All information presented by the EXAA Daily Spotlight is owned by the Energy Exchange Austria (EXAA). This information does not constitute any advice to buy or sell an energy product. EXAA does not assume the responsibility of the completeness or correctness of the information.

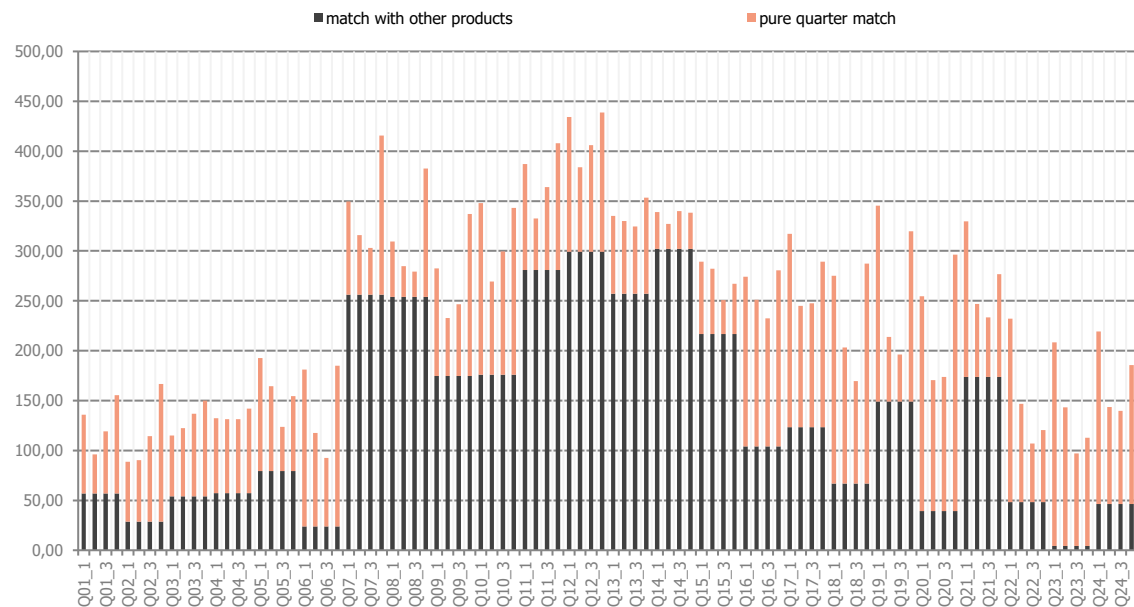
Quarter Hour Prices

Delivery Day: **26.4.2018**



Product /	Price	Product /	Price
Q01_1	36,75	Q13_1	34,38
Q01_2	28,77	Q13_2	27,36
Q01_3	24,00	Q13_3	26,00
Q01_4	17,27	Q13_4	21,05
Q02_1	31,37	Q14_1	29,70
Q02_2	21,50	Q14_2	24,45
Q02_3	20,01	Q14_3	22,30
Q02_4	14,95	Q14_4	17,47
Q03_1	23,00	Q15_1	20,17
Q03_2	16,58	Q15_2	22,55
Q03_3	17,84	Q15_3	21,59
Q03_4	14,30	Q15_4	23,58
Q04_1	18,28	Q16_1	20,15
Q04_2	16,40	Q16_2	21,88
Q04_3	16,29	Q16_3	24,82
Q04_4	17,67	Q16_4	26,75
Q05_1	11,78	Q17_1	14,66
Q05_2	17,06	Q17_2	21,17
Q05_3	21,00	Q17_3	28,16
Q05_4	28,13	Q17_4	35,86
Q06_1	14,73	Q18_1	<b>11,28</b>
Q06_2	20,56	Q18_2	24,07
Q06_3	27,70	Q18_3	38,70
Q06_4	37,89	Q18_4	49,00
Q07_1	21,24	Q19_1	19,47
Q07_2	35,87	Q19_2	32,99
Q07_3	41,56	Q19_3	44,00
Q07_4	46,00	Q19_4	54,50
Q08_1	38,94	Q20_1	32,42
Q08_2	43,71	Q20_2	41,69
Q08_3	42,00	Q20_3	46,94
Q08_4	37,69	Q20_4	<b>56,26</b>
Q09_1	53,69	Q21_1	48,70
Q09_2	45,74	Q21_2	44,85
Q09_3	40,24	Q21_3	44,24
Q09_4	31,32	Q21_4	43,82
Q10_1	51,28	Q22_1	54,50
Q10_2	42,40	Q22_2	47,11
Q10_3	35,17	Q22_3	39,20
Q10_4	27,90	Q22_4	33,15
Q11_1	41,91	Q23_1	51,49
Q11_2	33,85	Q23_2	46,00
Q11_3	29,00	Q23_3	38,46
Q11_4	23,22	Q23_4	30,14
Q12_1	39,83	Q24_1	46,12
Q12_2	33,10	Q24_2	38,80
Q12_3	31,20	Q24_3	31,49
Q12_4	21,64	Q24_4	23,32

Quarter Hour Volumes



Quarter Hour Product Indicators

qEXA MIN Price of the Day:	<b>11,28</b> EUR/MWh	Q18_1	MIN Spread (hEXA - qEXA) of the Day:	-18,24 EUR	Q18_4
qEXA MAX Price of the Day:	<b>56,26</b> EUR/MWh	Q20_4	MAX Spread (hEXA - qEXA) of the Day:	19,48 EUR	Q18_1