

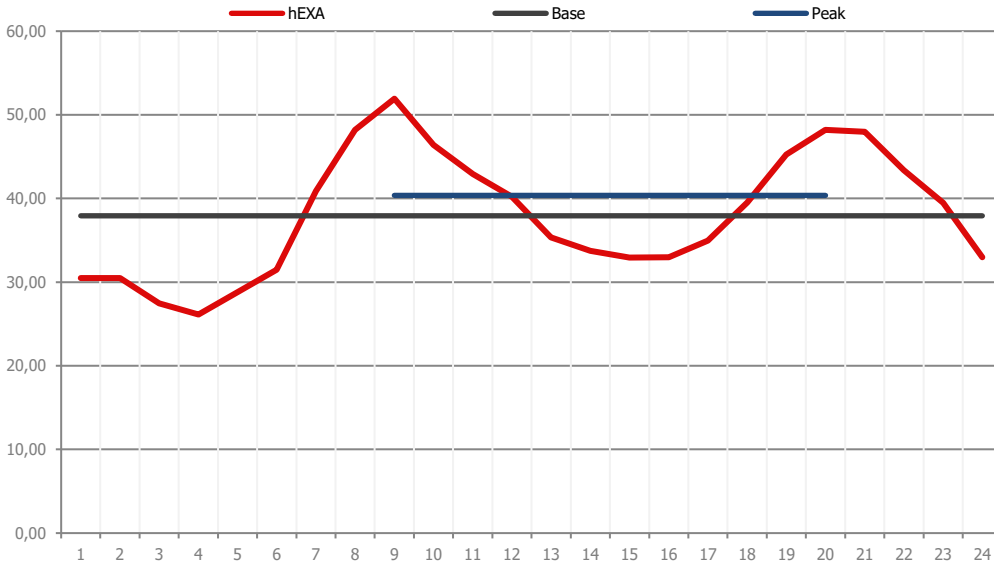
Hourly Prices [EUR/MWh]

Trade Day: **26.04.2018**

Delivery Day: **27.4.2018**

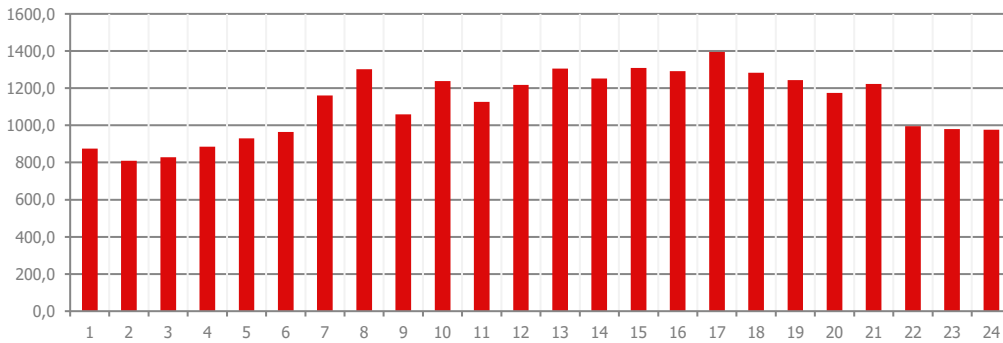
1	2	3	4	5	6	7	8	9	10	11	12	13	14	15	16	17	18	19	20	21	22	23	24
30,49	30,49	27,47	26,13	28,80	31,50	40,88	48,19	51,93	46,42	42,92	40,22	35,36	33,73	32,93	32,99	34,98	39,50	45,26	48,20	47,99	43,39	39,49	32,99
↑	↑	↑	↑	↑	↑	↑	↑	↑	↑	↑	↑	↑	↑	↑	↑	↑	↑	↑	↑	↑	↓	↓	↓

Hourly Product Results



Block Prices [EUR/MWh]

bEXAbase (01-24)	37,93	↑
bEXApeak (09-20)	40,37	↑
bEXAoffpeak (01-08/21-24)	35,48	↑
bEXAoffice (09-16)	39,56	↑
bEXAoff1 (01-08)	32,74	↑
bEXAoff2 (21-24)	40,97	↓
bEXAdream (01-06)	28,81	↑
bEXAlunch (11-14)	38,06	↑
bEXAteatime (17-20)	41,98	↑
bEXAmoonlight (01-04)	28,14	↑
bEXAsunrise (05-08)	37,34	↑
bEXAearlytwin (09-10)	49,18	↑
bEXAlatetwin (15-16)	32,96	↑
bEXAwakeup (07-08)	44,53	↑
bEXAprime (21-22)	45,69	↑



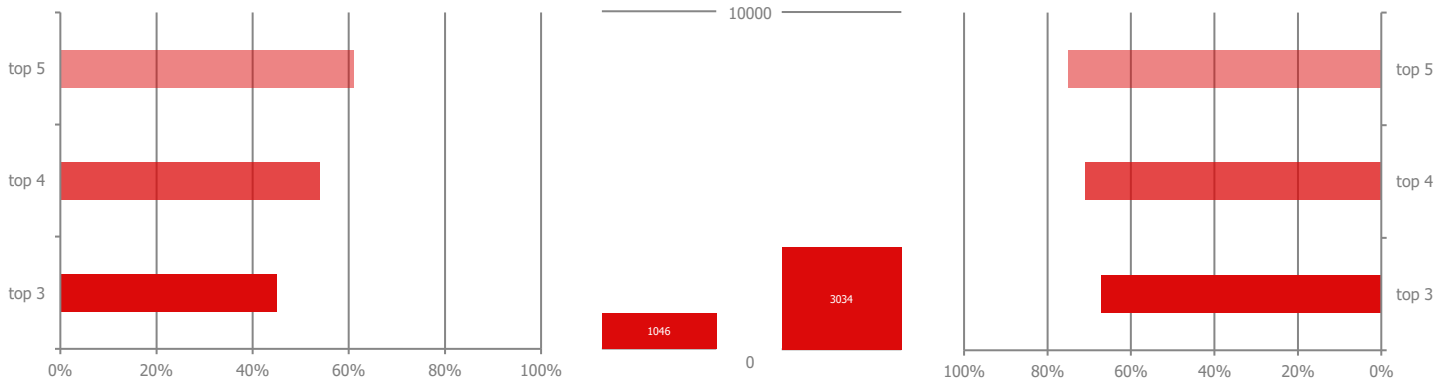
Volumes [MWh]

For Day: 27.4.2018	26.828,13	↓
Current Month	623.999,93	
Last Month	693.082,28	

Market Concentration **buying** side

Herfindahl Index

Market Concentration **selling** side

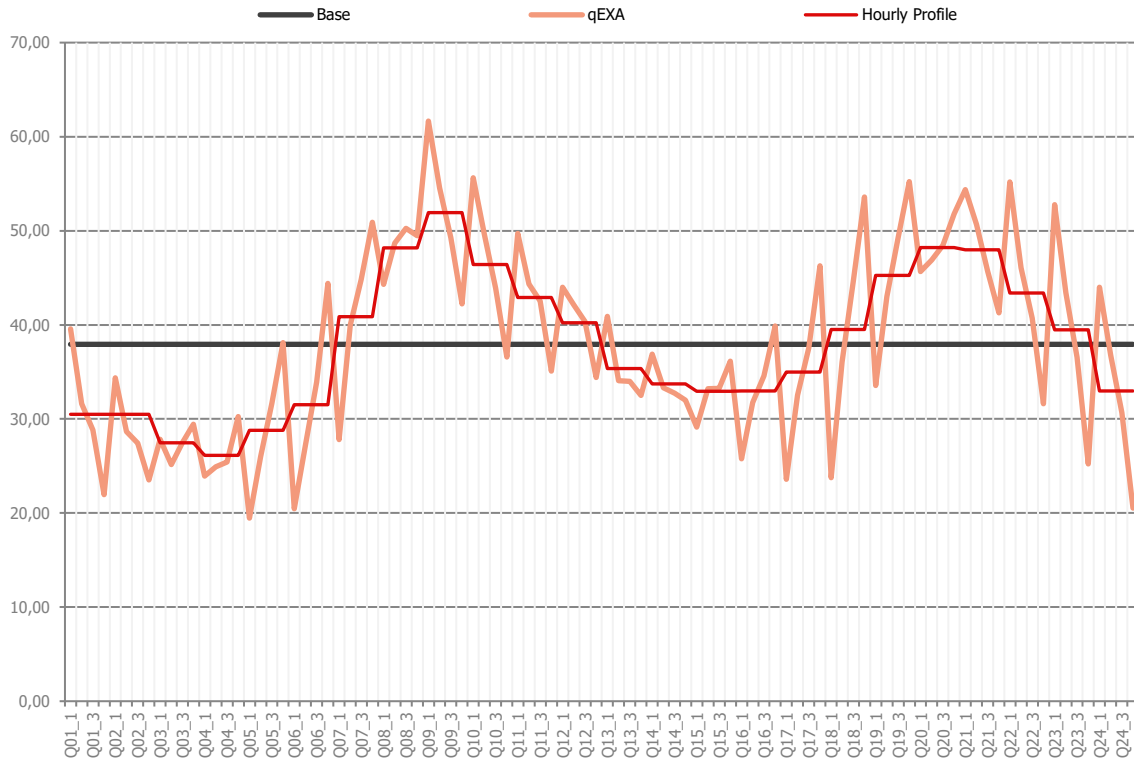


Marketshare of the 3/4/5 largest participants according to the daily trading volume. Herfindahl Index moving from a very large amount of very small participants (0) to a single monopoly (10000).

**Disclaimer:** All information presented by the EXAA Daily Spotlight is owned by the Energy Exchange Austria (EXAA). This information does not constitute any advice to buy or sell an energy product. EXAA does not assume the responsibility of the completeness or correctness of the information.

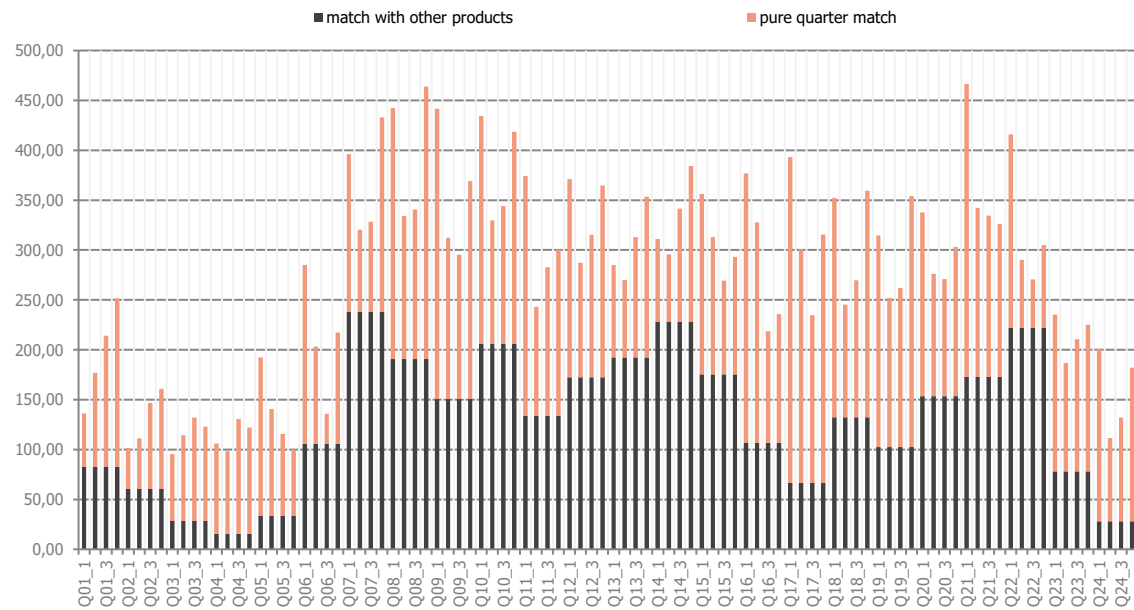
Quarter Hour Prices

Delivery Day: **27.4.2018**



Product /	Price	Product /	Price
Q01_1	39,59	Q13_1	40,89
Q01_2	31,60	Q13_2	34,06
Q01_3	28,81	Q13_3	33,98
Q01_4	21,96	Q13_4	32,50
Q02_1	34,36	Q14_1	36,88
Q02_2	28,64	Q14_2	33,30
Q02_3	27,42	Q14_3	32,73
Q02_4	23,51	Q14_4	31,99
Q03_1	27,83	Q15_1	29,14
Q03_2	25,14	Q15_2	33,20
Q03_3	27,49	Q15_3	33,26
Q03_4	29,43	Q15_4	36,13
Q04_1	23,94	Q16_1	25,77
Q04_2	24,90	Q16_2	31,76
Q04_3	25,44	Q16_3	34,57
Q04_4	30,24	Q16_4	39,87
Q05_1	19,46	Q17_1	23,58
Q05_2	26,00	Q17_2	32,52
Q05_3	31,64	Q17_3	37,53
Q05_4	38,10	Q17_4	46,27
Q06_1	20,46	Q18_1	23,74
Q06_2	27,21	Q18_2	36,05
Q06_3	33,92	Q18_3	44,62
Q06_4	44,40	Q18_4	53,60
Q07_1	27,80	Q19_1	33,57
Q07_2	40,00	Q19_2	43,01
Q07_3	44,81	Q19_3	49,24
Q07_4	50,92	Q19_4	55,21
Q08_1	44,30	Q20_1	45,68
Q08_2	48,70	Q20_2	46,88
Q08_3	50,27	Q20_3	48,45
Q08_4	49,47	Q20_4	51,79
Q09_1	61,66	Q21_1	54,36
Q09_2	54,56	Q21_2	50,66
Q09_3	49,26	Q21_3	45,65
Q09_4	42,24	Q21_4	41,28
Q10_1	55,63	Q22_1	55,20
Q10_2	49,57	Q22_2	46,07
Q10_3	43,90	Q22_3	40,69
Q10_4	36,59	Q22_4	31,61
Q11_1	49,70	Q23_1	52,78
Q11_2	44,33	Q23_2	43,42
Q11_3	42,54	Q23_3	36,55
Q11_4	35,09	Q23_4	25,22
Q12_1	44,00	Q24_1	44,00
Q12_2	42,13	Q24_2	36,80
Q12_3	40,36	Q24_3	30,66
Q12_4	34,40	Q24_4	20,51

Quarter Hour Volumes



Quarter Hour Product Indicators

qEXA MIN Price of the Day: **19,46** EUR/MWh    Q05\_1    MIN Spread (hEXA - qEXA) of the Day: -14,1 EUR    Q18\_4  
 qEXA MAX Price of the Day: **61,66** EUR/MWh    Q09\_1    MAX Spread (hEXA - qEXA) of the Day: 15,76 EUR    Q18\_1