

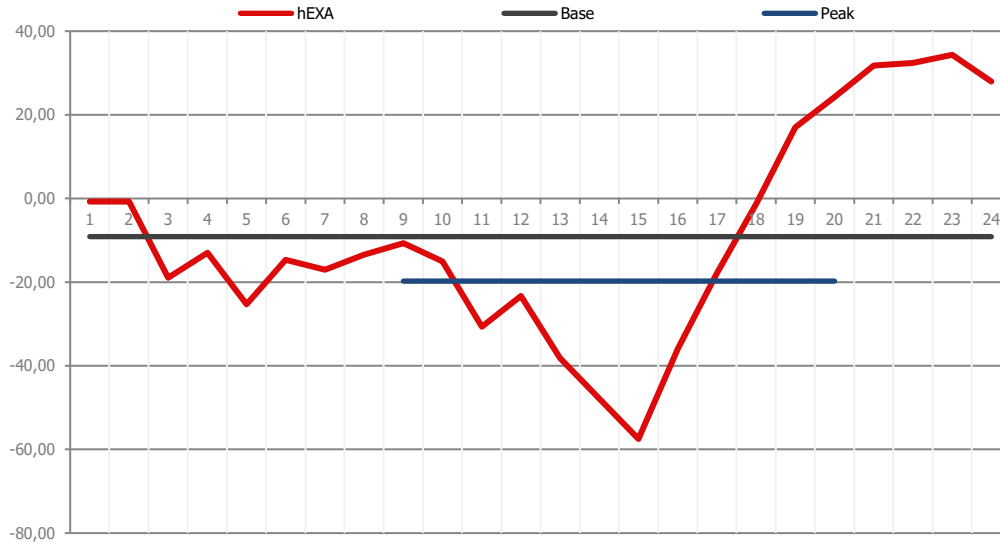
Hourly Prices [EUR/MWh]

Trade Day: **30.04.2018**

Delivery Day: **1.5.2018**

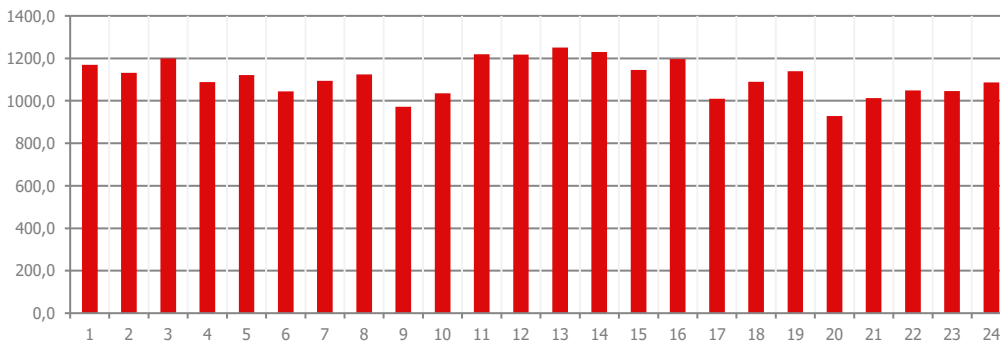
1	2	3	4	5	6	7	8	9	10	11	12	13	14	15	16	17	18	19	20	21	22	23	24
-0,70	-0,70	-18,96	-13,01	-25,28	-14,66	-17,05	-13,40	-10,70	-15,03	-30,63	-23,30	-38,18	-47,90	-57,49	-35,90	-17,84	-1,26	17,00	24,24	31,82	32,41	34,35	28,00
↓	↓	↓	↓	↓	↓	↓	↓	↓	↓	↓	↓	↓	↓	↓	↓	↓	↓	↓	↓	↓	↓	↓	↓

Hourly Product Results



Block Prices [EUR/MWh]

bEXAbase (01-24)	-9,12	↓
bEXApeak (09-20)	-19,75	↓
bEXAoffpeak (01-08/21-24)	1,51	↓
bEXAoffice (09-16)	-32,39	↓
bEXAoff1 (01-08)	-13,55	↓
bEXAoff2 (21-24)	31,64	↓
bEXAdream (01-06)	-13,00	↓
bEXAlunch (11-14)	-35,00	↓
bEXAteatime (17-20)	5,54	↓
bEXAmoonlight (01-04)	-9,51	↓
bEXAsunrise (05-08)	-17,60	↓
bEXAearlytwin (09-10)	-12,87	↓
bEXAlatetwin (15-16)	-46,69	↓
bEXAawakeup (07-08)	-15,22	↓
bEXAprime (21-22)	32,11	↓



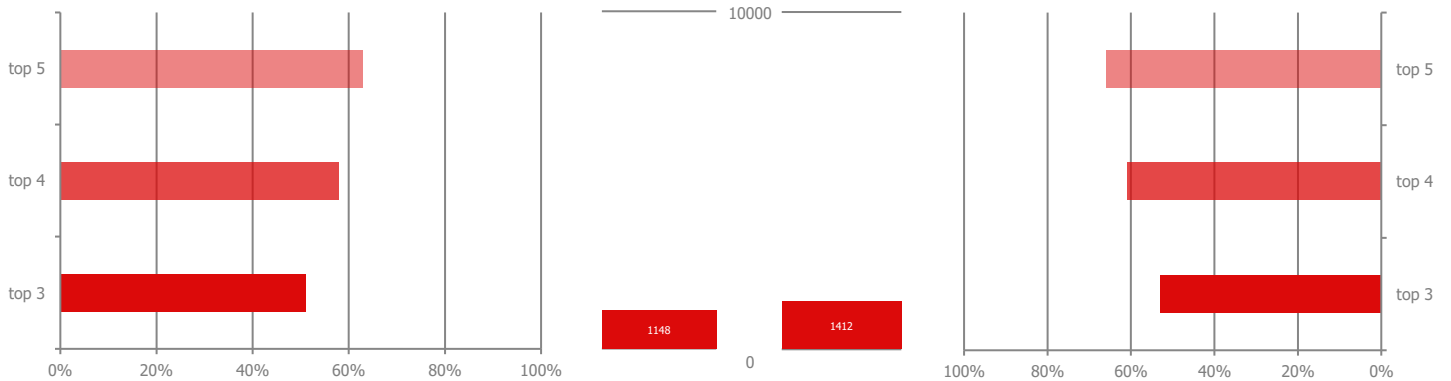
Volumes [MWh]

For Day: 1.5.2018	26.601,13	↑
Current Month	692.149,93	
Last Month	693.082,28	

Market Concentration **buying** side

Herfindahl Index

Market Concentration **selling** side

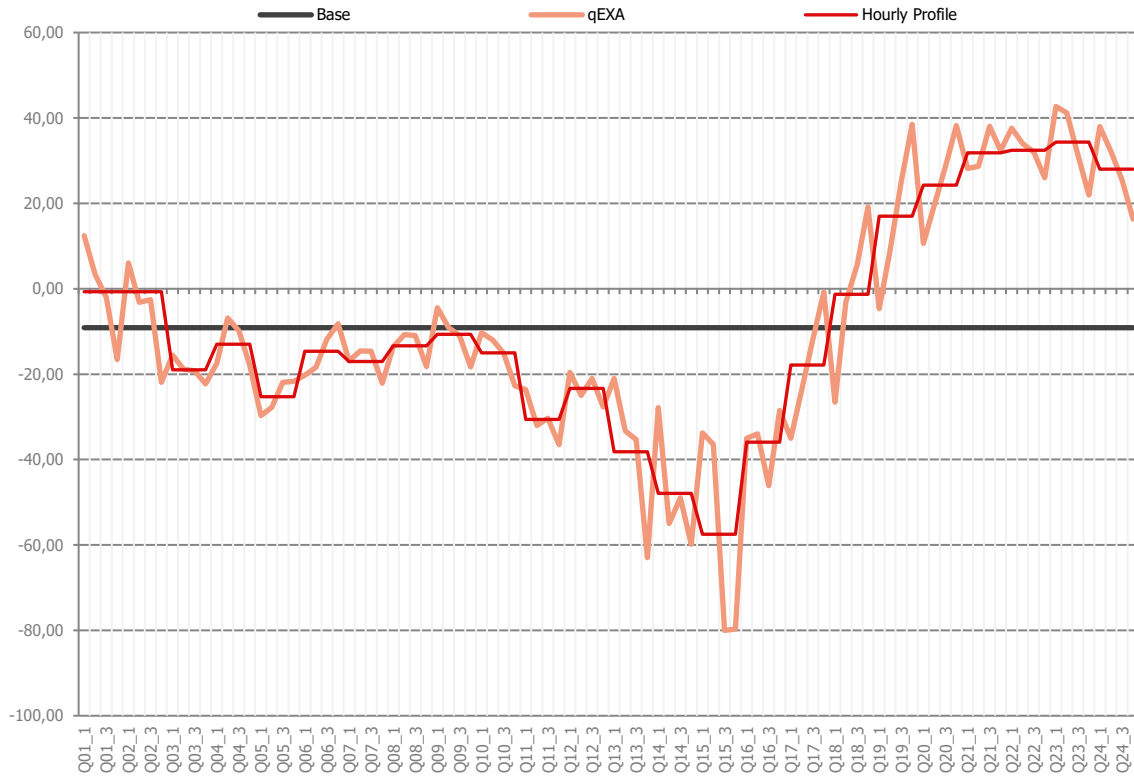


Marketshare of the 3/4/5 largest participants according to the daily trading volume. Herfindahl Index moving from a very large amount of very small participants (0) to a single monopoly (10000).

Disclaimer: All information presented by the EXAA Daily Spotlight is owned by the Energy Exchange Austria (EXAA). This information does not constitute any advice to buy or sell an energy product. EXAA does not assume the responsibility of the completeness or correctness of the information.

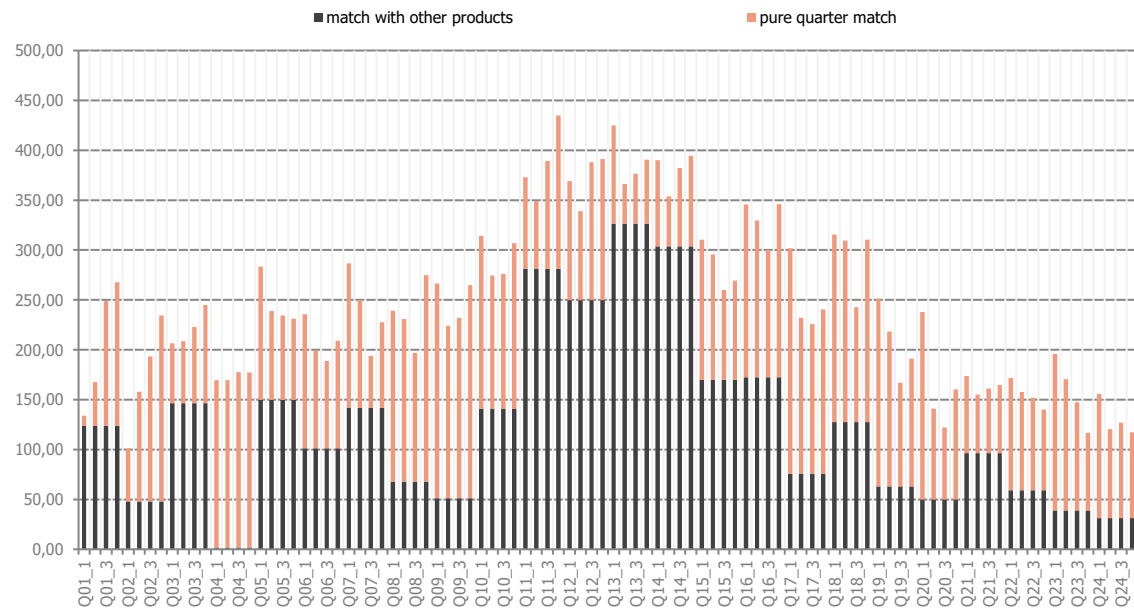
Quarter Hour Prices

Delivery Day: **1.5.2018**



Product / Price	Product / Price	Product / Price	Product / Price
Q01_1 12,43	Q13_1 -21,04		
Q01_2 3,36	Q13_2 -33,28		
Q01_3 -2,02	Q13_3 -35,36		
Q01_4 -16,55	Q13_4 -63,02		
Q02_1 6,07	Q14_1 -27,83		
Q02_2 -3,14	Q14_2 -55,00		
Q02_3 -2,56	Q14_3 -48,94		
Q02_4 -21,93	Q14_4 -59,84		
Q03_1 -15,57	Q15_1 -33,79		
Q03_2 -18,80	Q15_2 -36,46		
Q03_3 -19,19	Q15_3 -80,00		
Q03_4 -22,26	Q15_4 -79,69		
Q04_1 -17,50	Q16_1 -34,99		
Q04_2 -6,82	Q16_2 -33,99		
Q04_3 -9,81	Q16_3 -46,15		
Q04_4 -17,91	Q16_4 -28,47		
Q05_1 -29,73	Q17_1 -35,05		
Q05_2 -27,78	Q17_2 -23,70		
Q05_3 -21,90	Q17_3 -11,81		
Q05_4 -21,70	Q17_4 -0,80		
Q06_1 -20,25	Q18_1 -26,59		
Q06_2 -18,41	Q18_2 -3,13		
Q06_3 -11,79	Q18_3 5,52		
Q06_4 -8,20	Q18_4 19,18		
Q07_1 -16,86	Q19_1 -4,69		
Q07_2 -14,56	Q19_2 8,99		
Q07_3 -14,63	Q19_3 25,20		
Q07_4 -22,13	Q19_4 38,50		
Q08_1 -13,62	Q20_1 10,60		
Q08_2 -10,76	Q20_2 19,55		
Q08_3 -11,00	Q20_3 28,58		
Q08_4 -18,20	Q20_4 38,21		
Q09_1 -4,44	Q21_1 28,14		
Q09_2 -9,09	Q21_2 28,71		
Q09_3 -10,97	Q21_3 38,05		
Q09_4 -18,31	Q21_4 32,36		
Q10_1 -10,28	Q22_1 37,62		
Q10_2 -11,98	Q22_2 34,00		
Q10_3 -15,11	Q22_3 32,00		
Q10_4 -22,76	Q22_4 26,00		
Q11_1 -23,61	Q23_1 42,70		
Q11_2 -32,04	Q23_2 41,22		
Q11_3 -30,30	Q23_3 31,53		
Q11_4 -36,55	Q23_4 21,95		
Q12_1 -19,59	Q24_1 38,00		
Q12_2 -24,96	Q24_2 32,10		
Q12_3 -20,98	Q24_3 25,58		
Q12_4 -27,66	Q24_4 16,33		

Quarter Hour Volumes

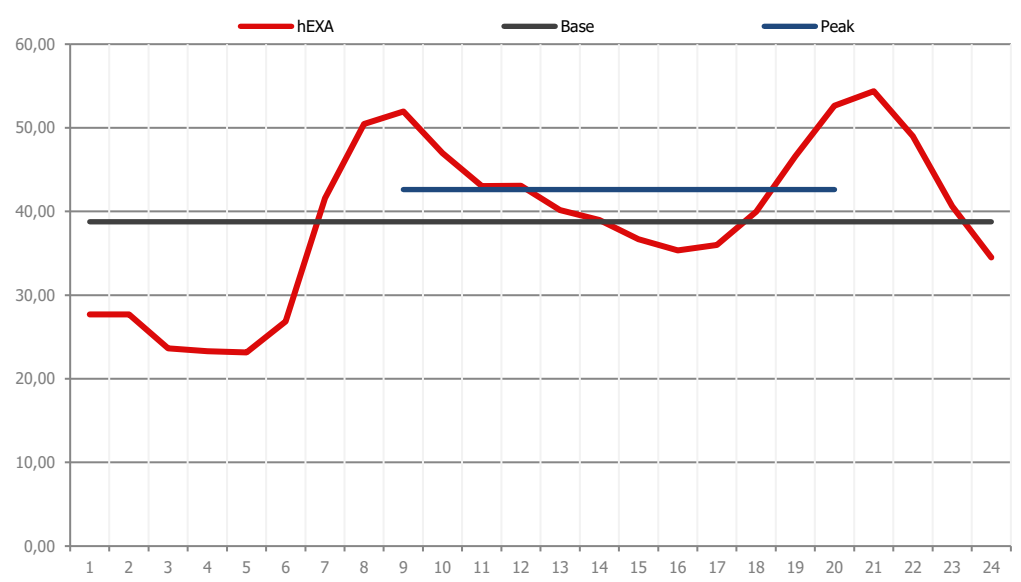


Quarter Hour Product Indicators

qEXA MIN Price of the Day: -80,00 EUR/MWh	Q15_3	MIN Spread (hEXA - qEXA) of the Day: -23,7 EUR	Q15_1
qEXA MAX Price of the Day: 42,70 EUR/MWh	Q23_1	MAX Spread (hEXA - qEXA) of the Day: 25,33 EUR	Q18_1

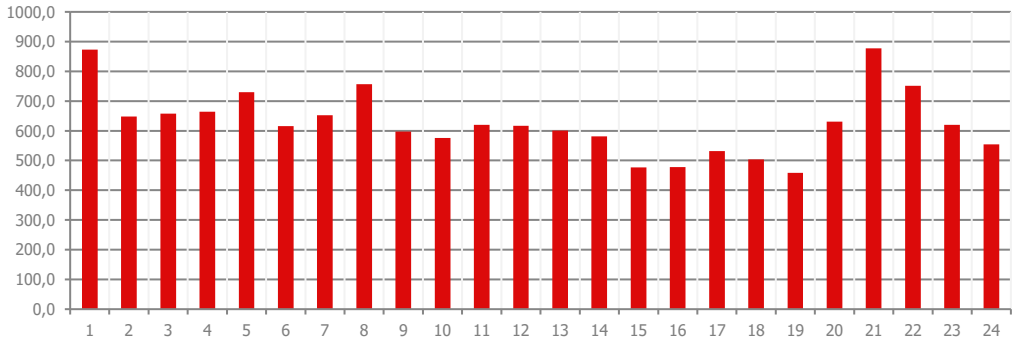
Hourly Prices [EUR/MWh]																		Trade Day: 30.04.2018				Delivery Day: 2.5.2018	
1	2	3	4	5	6	7	8	9	10	11	12	13	14	15	16	17	18	19	20	21	22	23	24
27,71	27,71	23,63	23,31	23,15	26,87	41,60	50,47	51,96	46,98	43,02	43,08	40,18	39,00	36,70	35,36	36,00	39,99	46,60	52,63	54,38	49,00	40,62	34,52
↑	↑	↑	↑	↑	↑	↑	↑	↑	↑	↑	↑	↑	↑	↑	↑	↑	↑	↑	↑	↑	↑	↑	↑

Hourly Product Results



Block Prices [EUR/MWh]

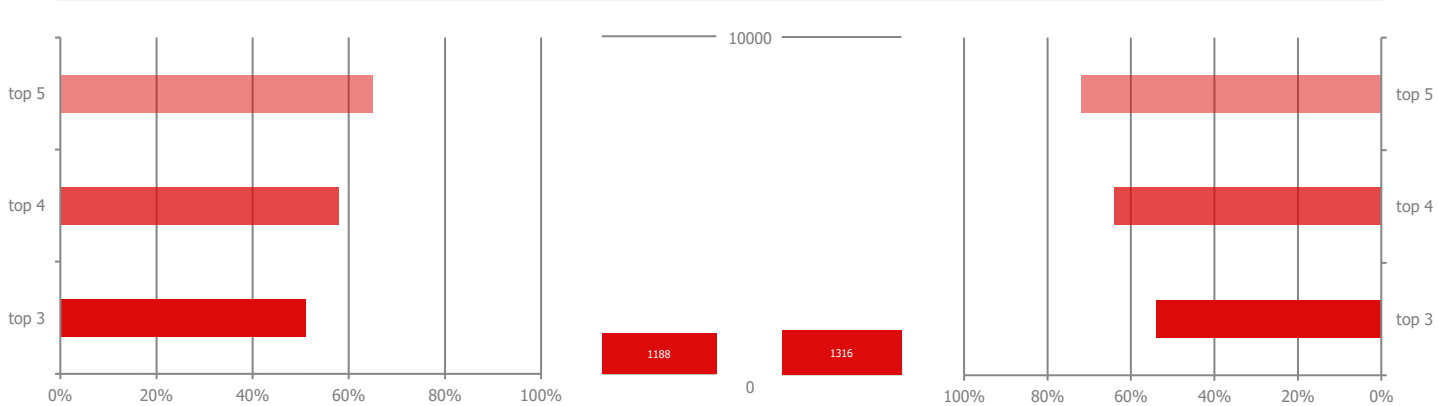
bEXAbase (01-24)	38,77	↑
bEXApeak (09-20)	42,62	↑
bEXAoffpeak (01-08/21-24)	34,92	↑
bEXAoffice (09-16)	42,03	↑
bEXAoff1 (01-08)	30,07	↑
bEXAoff2 (21-24)	44,63	↑
bEXAdream (01-06)	24,75	↑
bEXAlunch (11-14)	41,32	↑
bEXAteatime (17-20)	43,80	↑
bEXAmoonlight (01-04)	24,62	↑
bEXAsunrise (05-08)	35,52	↑
bEXAearlytwin (09-10)	49,47	↑
bEXAlatetwin (15-16)	36,03	↑
bEXAawakeup (07-08)	46,03	↑
bEXAprime (21-22)	51,69	↑



Volumes [MWh]

For Day: 2.5.2018	15.070,68	↓
Current Month	692.149,93	
Last Month	693.082,28	

Market Concentration **buying** side Herfindahl Index Market Concentration **selling** side

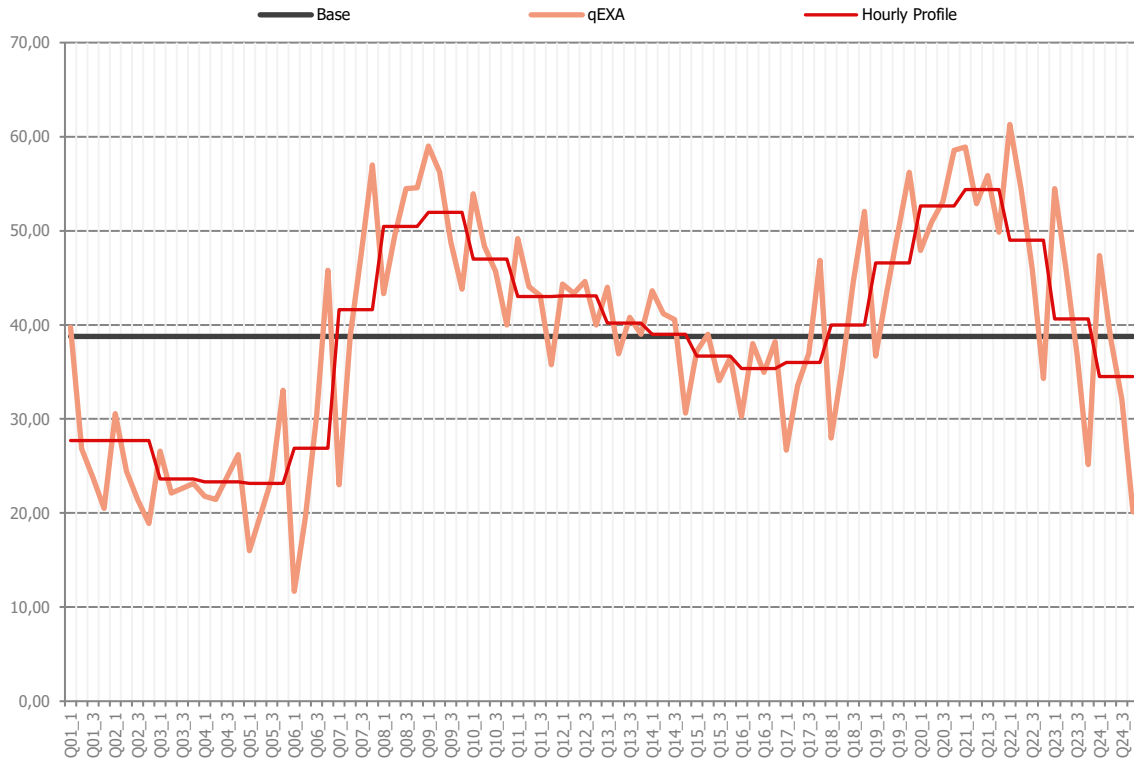


Marketshare of the 3/4/5 largest participants according to the daily trading volume. Herfindahl Index moving from a very large amount of very small participants (0) to a single monopoly (10000).

Disclaimer: All information presented by the EXAA Daily Spotlight is owned by the Energy Exchange Austria (EXAA). This information does not constitute any advice to buy or sell an energy product. EXAA does not assume the responsibility of the completeness or correctness of the information.

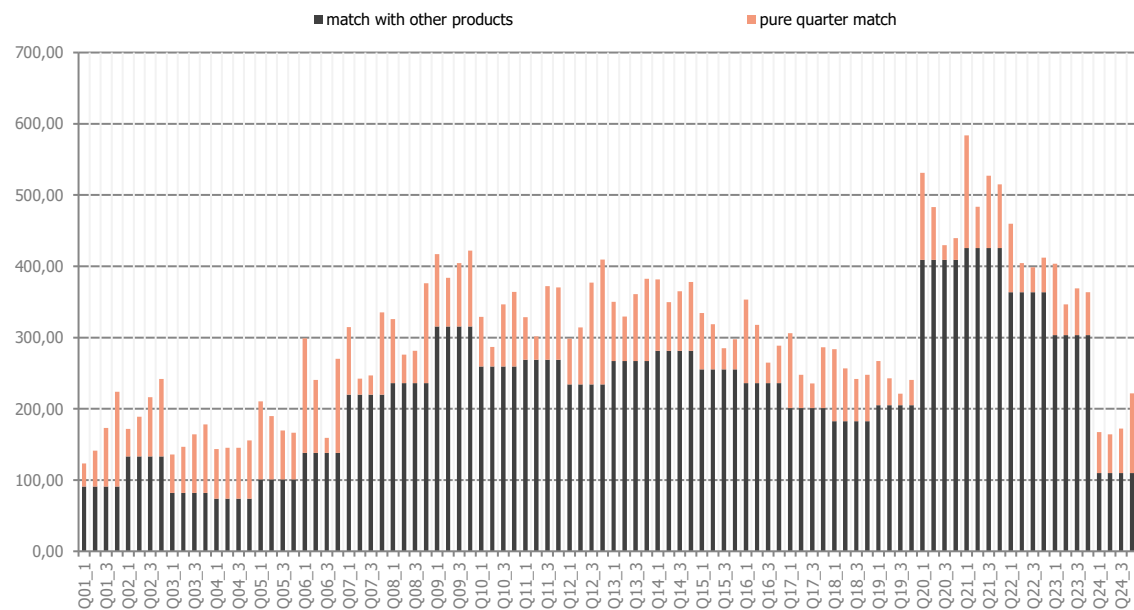
Quarter Hour Prices

Delivery Day: **2.5.2018**



Product /	Price	Product /	Price
Q01_1	39,74	Q13_1	44,00
Q01_2	26,81	Q13_2	36,93
Q01_3	23,80	Q13_3	40,80
Q01_4	20,50	Q13_4	39,00
Q02_1	30,56	Q14_1	43,63
Q02_2	24,42	Q14_2	41,19
Q02_3	21,40	Q14_3	40,55
Q02_4	18,90	Q14_4	30,63
Q03_1	26,59	Q15_1	37,19
Q03_2	22,13	Q15_2	39,00
Q03_3	22,63	Q15_3	34,08
Q03_4	23,15	Q15_4	36,53
Q04_1	21,77	Q16_1	30,27
Q04_2	21,43	Q16_2	38,00
Q04_3	23,83	Q16_3	34,94
Q04_4	26,19	Q16_4	38,22
Q05_1	16,00	Q17_1	26,68
Q05_2	19,85	Q17_2	33,51
Q05_3	23,70	Q17_3	36,94
Q05_4	33,03	Q17_4	46,85
Q06_1	11,68	Q18_1	27,99
Q06_2	19,60	Q18_2	35,37
Q06_3	30,40	Q18_3	44,54
Q06_4	45,80	Q18_4	52,06
Q07_1	23,00	Q19_1	36,69
Q07_2	38,90	Q19_2	43,57
Q07_3	47,50	Q19_3	49,91
Q07_4	57,00	Q19_4	56,22
Q08_1	43,31	Q20_1	47,90
Q08_2	49,51	Q20_2	50,94
Q08_3	54,46	Q20_3	53,13
Q08_4	54,58	Q20_4	58,55
Q09_1	59,00	Q21_1	58,90
Q09_2	56,24	Q21_2	52,89
Q09_3	48,79	Q21_3	55,87
Q09_4	43,80	Q21_4	49,84
Q10_1	53,92	Q22_1	61,30
Q10_2	48,35	Q22_2	54,46
Q10_3	45,65	Q22_3	45,94
Q10_4	40,00	Q22_4	34,30
Q11_1	49,16	Q23_1	54,47
Q11_2	44,07	Q23_2	46,00
Q11_3	43,10	Q23_3	36,84
Q11_4	35,76	Q23_4	25,16
Q12_1	44,34	Q24_1	47,35
Q12_2	43,36	Q24_2	38,56
Q12_3	44,60	Q24_3	32,05
Q12_4	40,00	Q24_4	20,10

Quarter Hour Volumes



Quarter Hour Product Indicators

qEXA MIN Price of the Day:	11,68 EUR/MWh	Q06_1	MIN Spread (hEXA - qEXA) of the Day:	-18,93 EUR	Q06_4
qEXA MAX Price of the Day:	61,30 EUR/MWh	Q22_1	MAX Spread (hEXA - qEXA) of the Day:	18,6 EUR	Q07_1